



## Collision Estimating Database

Innovative, Comprehensive and Up-to-Date



# Collision Estimating Database

## Innovative Database Technology

### Advanced Estimating Logic

The cornerstone of the AudaExplore Database is its built-in estimating logic, which features:

- **Intelligent Data Coding:**

This coding links interconnected parts and then associates those parts with their related labor operations.

- **Inside-Out Methodology:**

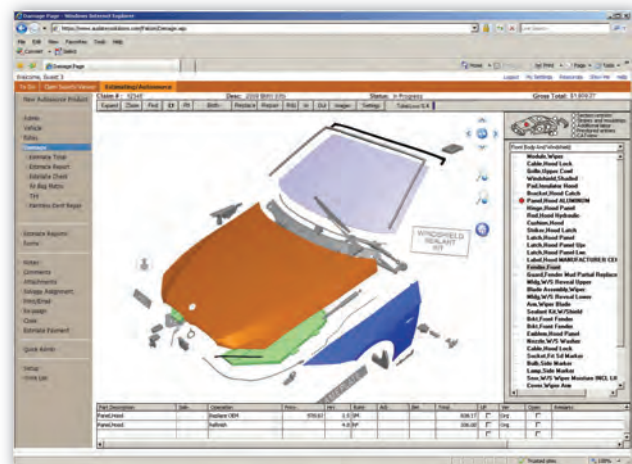
With this methodology, required labor operations are automatically included and duplicate (overlap) operations are automatically eliminated—resulting in accurate, vehicle-specific labor times that are developed using the same “inside out” approach used in the actual repair, which focuses on replacing the automobile’s innermost damaged part first.

### Automated Estimating with VIN Decode

Our database technology automates estimate creation—there are no rules to account for or interpret and no headnotes or footnotes to consider. Simply enter a VIN and select vehicle options to get the correct part numbers, pricing and labor times for an estimate.

In the automotive claims processing and collision repair industries, accurate vehicle parts and labor information is essential for compiling a precise collision estimate. At AudaExplore, we understand this and have a global team dedicated to building and maintaining the market’s leading collision estimating database. Each year, we invest more than \$90 million in our data and database technology to ensure that it’s innovative, comprehensive and up-to-date.

The AudaExplore Collision Estimating Database is the data powerhouse behind our estimating platform—Audatex Estimating™. Over 20,000 collision repairers, insurers and independent appraisers in North America rely on it every day.



**Generate Accurate Estimates,  
the First Time, Every Time**

### Interactive Graphics

The AudaExplore Database contains interactive graphics that are linked to parts, pricing and labor information, making it faster to produce an estimate by using a “point-and-click” approach.

Trusted by industry professionals since 1970, the AudaExplore Collision Estimating Database provides parts and labor data for over 25 million estimates worldwide every year.



## Comprehensive Data Coverage

### 99.5% Coverage of Vehicles on the Road Today, Dating Back to 1970

- Over 2.4 million part numbers
- More than 120,000 vehicle models
- More than 24,000 car options
- Over 990,000 graphics
- Over 8.5 million labor-time values
- Expanding coverage that includes ATVs, motorcycles, RVs and medium- to heavy-duty trucks

### Fastest New-Model Time-to-Market

- Up to 30% more new models delivered each year compared to other data providers
- 120 new models added each year, totaling:
  - 450,000 new parts
  - 1.4 million labor values
- Over 350 models updated each year

### Accurate Approach to Labor

Forty years of experience—backed by time and labor studies conducted with collision repairers in North America—ensures labor data accuracy and real-world usability.

## Up-to-Date, Quality Data

### Monthly Updates

- Over 250,000 data updates per month
- Vehicle part numbers, part pricing and labor information is updated monthly to maximize accuracy

### Round-the-Clock Data Development with Global Resources

With global data development expertise, AudaExplore can quickly share and localize vehicle data for region and country specific vehicle launches using our:

- **Worldwide Data Development Centers (DDCs):** These DDCs are in close proximity to key vehicle manufacturers, making it possible to deliver data faster.
- **Strategic, Worldwide Partnerships with Vehicle Manufacturers:** Through our global outreach, we have partnered with key car manufacturers and a growing number of truck and motorcycle manufacturers, resulting in easier data delivery.

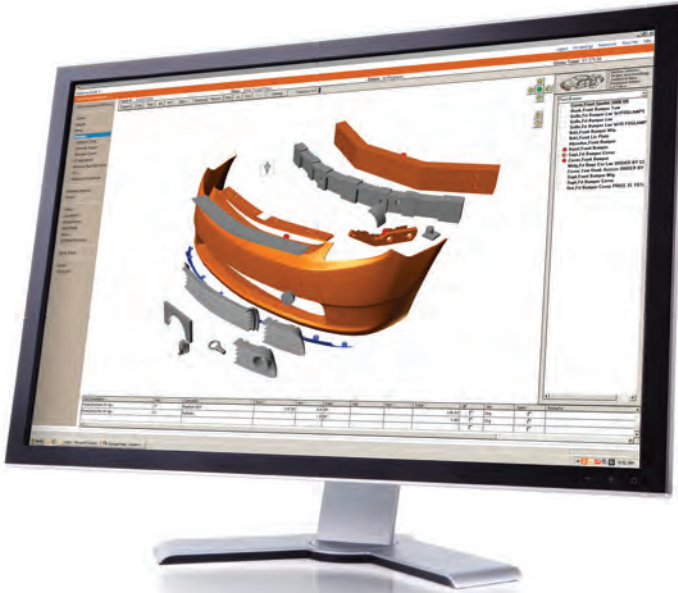
### Customer and Industry Partnerships

- **Request for Review (RFR) Process:** Through this process, customers can offer feedback on our parts, pricing, labor, graphic, and other data. Changes made as a result of this process are reflected in our monthly database updates.
- **Industry Forums:** AudaExplore actively participates in industry committees, conferences and associations, including CIC, CIECA and ETI. This participation provides us with a real-world forum to discuss market trends and capture industry feedback on vehicle data.
- **Strategic and Technical Advisory Councils:** AudaExplore meets with customers several times a year for discussions on current, and future, needs, including data and technology requests.

# The Future Is Here

## AudaExplore 3D Intelligent Graphics

AudaExplore 3D Intelligent Graphics is the latest innovation to our database. Now you can zoom and rotate interactive images for greater clarity in part selection. With color coding of selected parts, part types and substrate materials creating accurate estimates is that much easier.



“...we knew almost instantly that it (3D Graphics) could make a difference in our shop, in terms of both time savings and improvements in estimating accuracy.”

Steve Lukas, Senior Estimator  
Crown Collision Center,  
St. Petersburg, FL



## The AudaExplore Difference

Our customers require an efficient claims-management process. Producing an accurate estimate is a critical part of this process. Using AudaExplore's Collision Estimating Database—which powers our estimating applications—you can generate precise estimates every time. The database features:

- 99.5% vehicle coverage
- Innovative technology with advanced estimating logic
- Fastest time-to-market for new models
- Timely data updates
- Expertise in localizing global data



15030 Avenue of Science, Suite 100, San Diego, CA 92128

Tel: (800) 237-4968 Fax: (858) 946-1073

[www.audaexplore.com](http://www.audaexplore.com) [www.solerainc.com](http://www.solerainc.com)

© Audatex North America, Inc. All Rights Reserved. AUDATEX is a registered trademark owned by AUDATEX North America, Inc., or its affiliated companies, in the United States and/or other countries. - AUDXP7942R01